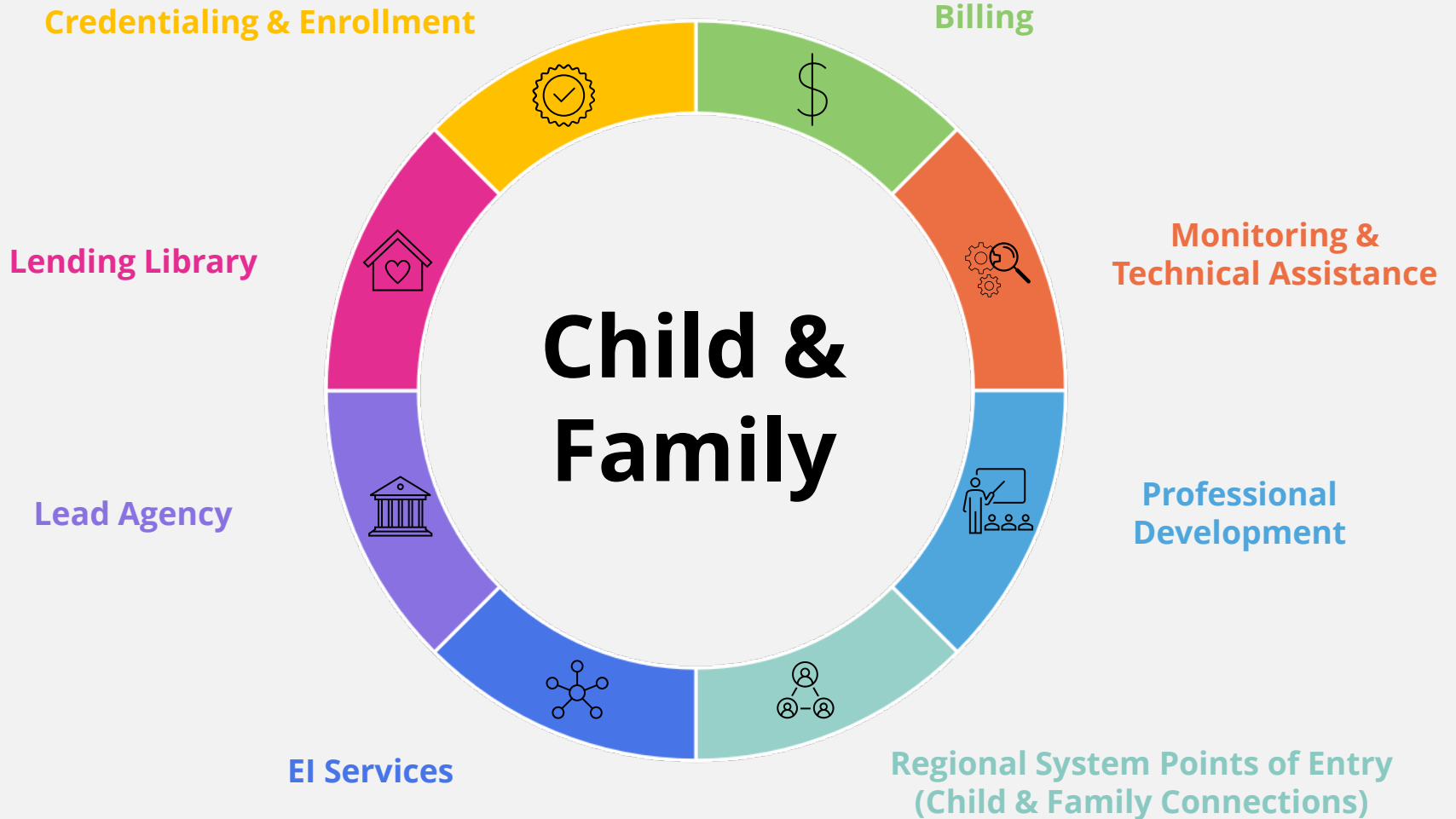


ILLINOIS EARLY INTERVENTION

System supports for Illinois Early Intervention. Click an icon to learn more!



Referral to EI

Family Guide

Provider Handbook

Public Awareness

CFC Manual



CREDENTIALING & ENROLLMENT

Provider Connections

If you have any questions regarding credentialing and/or enrollment for working in Illinois Early Intervention (EI), please contact Provider Connections for assistance.

Provider Connections is the Credentialing and Enrollment office for EI. Their website includes important updates that are geared directly for EI providers and is the primary location for IDHS policy, procedure, and payment updates.

Helpful Links

- [Credential Requirements](#)
- [Credential IMPACT, & Enrollment](#)
- [Renewal](#)
- [Provider Search](#)
- [Current IDHS Updates](#)



800/701-0995



providerconnections@wiu.edu



www.wiu.edu/ProviderConnections/



BILLING

EI Central Billing Office (EI-CBO)

If you have any questions regarding claims, the service authorization process, family fees, or insurance billing in Illinois Early Intervention (EI), please contact EI-CBO for assistance.

EI-CBO is the claims processing entity for the EI Services System. EI-CBO approves payments based upon service authorization guidelines for EI providers, submits and reconciles the monthly EI Medicaid claims to the IHFS, and provides data to assist CFCs to complete an initial verification of family insurance benefits. EI-CBO also maintains the family participation fee system, administers the collections process, provides technical assistance to EI families and providers, and administers the EI Insurance Billing Unit, a free service which bills insurance on behalf of EI providers.

Helpful Links

- [Insurance Billing Unit](#)
- [Billing Information for Providers \(pdf\)](#)
- [Provider resources](#)
- [Family resources](#)
- [CFC resources](#)



800/634-8540



eicbo.info



MONITORING & TECHNICAL ASSISTANCE

Illinois EI Technical Assistance & Monitoring

If you have any questions regarding monitoring & TA for Illinois Early Intervention (EI), please contact Illinois EI Technical Assistance and Monitoring for assistance.

The purpose of the EI Monitoring Program is to ensure that state and federal regulations regarding the delivery of Illinois EI services to infants and toddlers with delays or disabilities are met by providing documentation support, investigating complaints, conducting provider & CFC reviews, and ensuring compliance to policies.

Helpful Links

- Review Process Tools
 - [CFCs](#)
 - [Providers](#)
- [Family Resources](#)



Chicago: 773/929-3030

South Holland: 708/584-0367

Springfield: 217/503-4949



info@vanderweelegroup.com

No child identifying data please!



www.earlyinterventionmonitoring.org



PROFESSIONAL DEVELOPMENT

Early Intervention Training Program (EITP)

If you have any questions regarding professional development or evidence-based practices for working in Illinois Early Intervention (EI), please contact EITP for assistance.

For CFC personnel, EI providers, and other stakeholders, EITP provides professional development, licensure/credit hours, and technical assistance that is regionalized, responsive, and reflective of evidence-based practices in EI. EITP engages in cross-system collaboration, and supports the Family Outcomes Project, which measures the effectiveness of EI, and the Interpreter/Translator Project. EITP also houses the office of the EI Ombudsman, which focuses on local, state and national trends impacting Illinois' system as well as data to promote quality and compliance.

Helpful Links

- [EITP Events & Online Events](#)
- [Non-EITP Events approved for EI Credit](#)
- [Video Credit Requests](#)
- [Resources on IL EI & Best Practices](#)
- [New to EI](#)



866/509-3867



eitraining@illinois.edu



eitp.education.illinois.edu



REGIONAL SYSTEM POINTS OF ENTRY

Child & Family Connections (CFC)

If you have any questions regarding referral, entry, and participation in the local EI program, please contact the local Child & Family Connections office for assistance.

EI operates through 25 regional intake entities called Child and Family Connections (CFCs) located throughout the state. The CFCs include **Service Coordinators, Program Managers, Local Interagency Council (LIC) Coordinators, Parent Liaisons, and Social-Emotional Consultants**. They support the family in navigating the EI Program, provide **Developmental Pediatric Consultation Services**, and help with **Transition** to local school districts at age 3. Service Coordinators partner with the family through each stage of the Individualized Family Service Plan (IFSP) process, generate authorizations to the EI providers who will be providing services to the family, and support families as they exit or transition from EI.

Helpful Links

- [Overview of CFC](#)
- [CFC Support Services](#)
- [CFC Procedure Manual](#)
- [CFC Forms](#)
- [Resources for CFCs](#)



Latest CFC Office Listing (pdf)
go.illinois.edu/CFCListing



CFC Office Locator
dhs.state.il.us/page.aspx?module=12&officetype=4



LEAD AGENCY

IDHS Bureau of EI

If you have any questions regarding Illinois Early Intervention (EI) administrative oversight, compliance confirmation, funding, reporting, and data collection and sharing, please contact Illinois Department of Human Services (IDHS) Bureau of EI for assistance.

IDHS serves as the lead agency and has designated the Bureau of EI to administer the statewide EI Services System. The Bureau works to oversee the entire EI program and partners, complete requisite reporting, comply with regulations for federal funding, manage statewide data collection, and share data. The Illinois Interagency Council on EI (IICEI) advises and assists the Bureau in the performance of its responsibilities and support to EI agencies.

Helpful Links

- [EI Reporting & Applications](#)
- [EI Handbooks & Manuals](#)
- [Illinois Interagency Council on EI \(IICEI\)](#)
- [Public Awareness Materials](#)



217/782-1981



dhs.eiquestions@illinois.gov



IDHS Early Intervention Information page
www.dhs.state.il.us/page.aspx?item=31183



LENDING LIBRARY

Illinois EI Clearinghouse

If you have any questions regarding research-based and best-practice information to share with families about Illinois Early Intervention (EI), please contact the EI Clearinghouse for assistance.

The EI Clearinghouse provides library and information services to residents of Illinois interested in EI topics. It is a free resource to access information on health, educational, disability, and developmental concerns of infants and young children. The EI Clearinghouse offers a large lending library of books, eBooks, videos, and articles to provide families and providers with the up-to-date and reliable information they need to support children's growth and development.

Helpful Links

- [Resources for Families](#)
- [Resources for EI Staff & Providers](#)
- [Free Lending Library](#)
- [Central Directory](#)
- [Technology Loan](#)



877/275-3227



illinois-eic@illinois.edu



eiclearinghouse.org



EI SERVICES

- Assistive Technology (AT)
- Audiology/Aural Rehabilitation
- Developmental Therapy (DT)
- Family Training & Support (includes Translation/Interpreter services)
- Health Consultation
- Medical services (only for diagnostic or evaluation purposes)
- Nursing
- Nutrition
- Occupational Therapy (OT)
- Physical Therapy (PT)
- Psychological and other counseling services
- Service Coordination
- Social Work and other counseling services
- Speech & Language Pathology (SLP)
- Transportation
- Vision services

Services may include Evaluation, Assessment, IFSP Development, and Direct Service, based upon family strengths and priorities.

Helpful Links

- [CFC Office Locator](#)
- [Central Directory](#)
- [Family Guide](#)
- [Provider Handbook](#)
- [CFC Procedure Manual](#)
- [Public Awareness Materials](#)

Natural Environments

"To the maximum extent appropriate to the needs of the child, EI services must be provided in natural environments, including the home and community settings in which children without disabilities participate."

- Part C of IDEA, 34 CFR §303.12(b)

Overview of Illinois EI Supports

Resources to contact and their areas of expertise in the EI system! Click an icon to learn more.



Provider Connections

- Credential Requirements
- Credential, IMPACT, and Enrollment
- Renewal
- Provider Search



Early Intervention Training Program

- Trainings
- Hours (Licensure & Credit)
- Evidence-Based Practices
- Family Outcomes Project
- Interpreter/Translator Project
- EI Ombudsman



EI Central Billing Office

- Vouchering
- Family Fees
- Claim Processing (Requirements)
- Insurance Billing
- Insurance Exceptions (Waivers & Exemptions)



EI Monitoring & TA

- Provider & CFC Reviews
- Compliance to Policies
- Documentation Support
- Complaint Investigation
- Technical Assistance



IDHS Bureau of EI

- Administrative Oversight
- Compliance Confirmation
- Funding & Reporting
- Data Collection & Sharing



Early Intervention Clearinghouse

- Family Outreach
- Resources & Materials
- Technology Loans
- Information Services



Child & Family Connections

- Service Coordinators
- Program Managers
- LIC Coordinators
- Parent Liaisons
- Social Emotional Consultants
- Developmental Pediatric Consultation Services
- Transition



EI Services

- 16 Direct Services
- Evaluation
- Assessment
- IFSP Development
- Transition